



f Fluid
Engineering, Inc.

PUMPS

FANS

**AIR POLLUTION
CONTROL**

**PNEUMATIC
CONVEYING**

**ENGINEERING &
REPAIR SERVICES**

*Engineered Solutions to
Industry's Most Demanding
Air and Liquid Applications*

PUMPS

Horizontally-split double-suction pump in power plant cooling water service



Fiberglass ANSI process pumps on seawater



Heavy-duty centrifugal pump on 12% paper stock.



Fluid Engineering provides pumps and custom pump packages for:

- Automotive,
- Chemical,
- Food Processing,
- Iron & Steel
- Minerals,
- Pharmaceuticals,
- Power,
- Pulp & Paper, and
- General Manufacturing Processes



Duplex stainless steel ANSI pump on wastewater sludge.

Batch metering system for a chemical additive.



An air-operated double-diaphragm chemical batch metering system for a specialty chemical supplier.



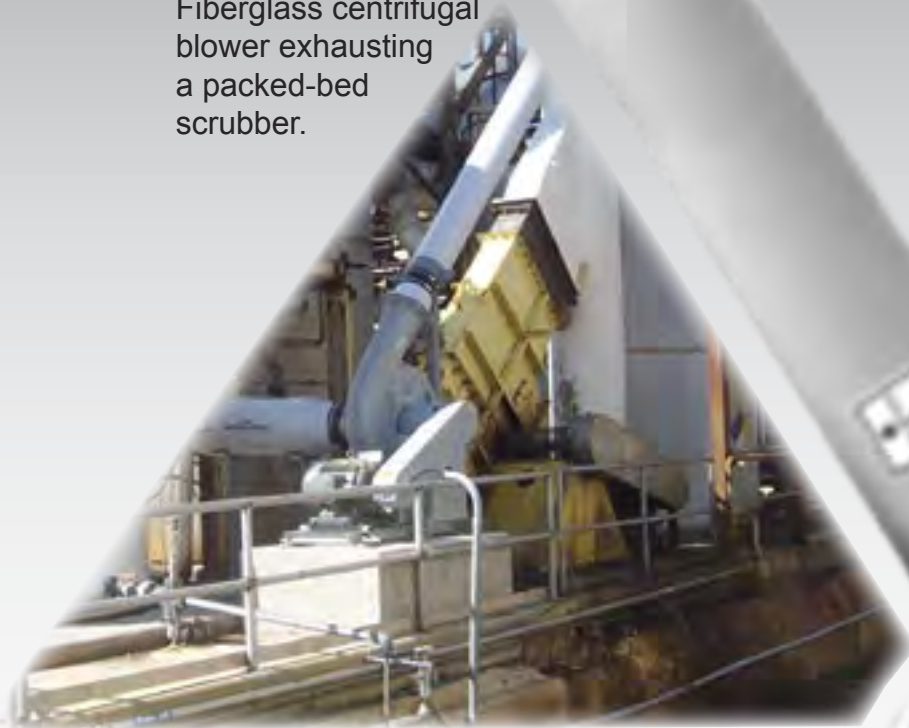
Four jacketed rotary gear pump units bound for rosin service.



From centrifugal to positive displacement, from batch transfer to precise metering, Fluid Engineering will size, select and build the best pump unit for your application.

FANS

Fiberglass centrifugal blower exhausting a packed-bed scrubber.



Fluid Engineering provides industrial ventilation for any size facility from small warehouses to large casting floors.

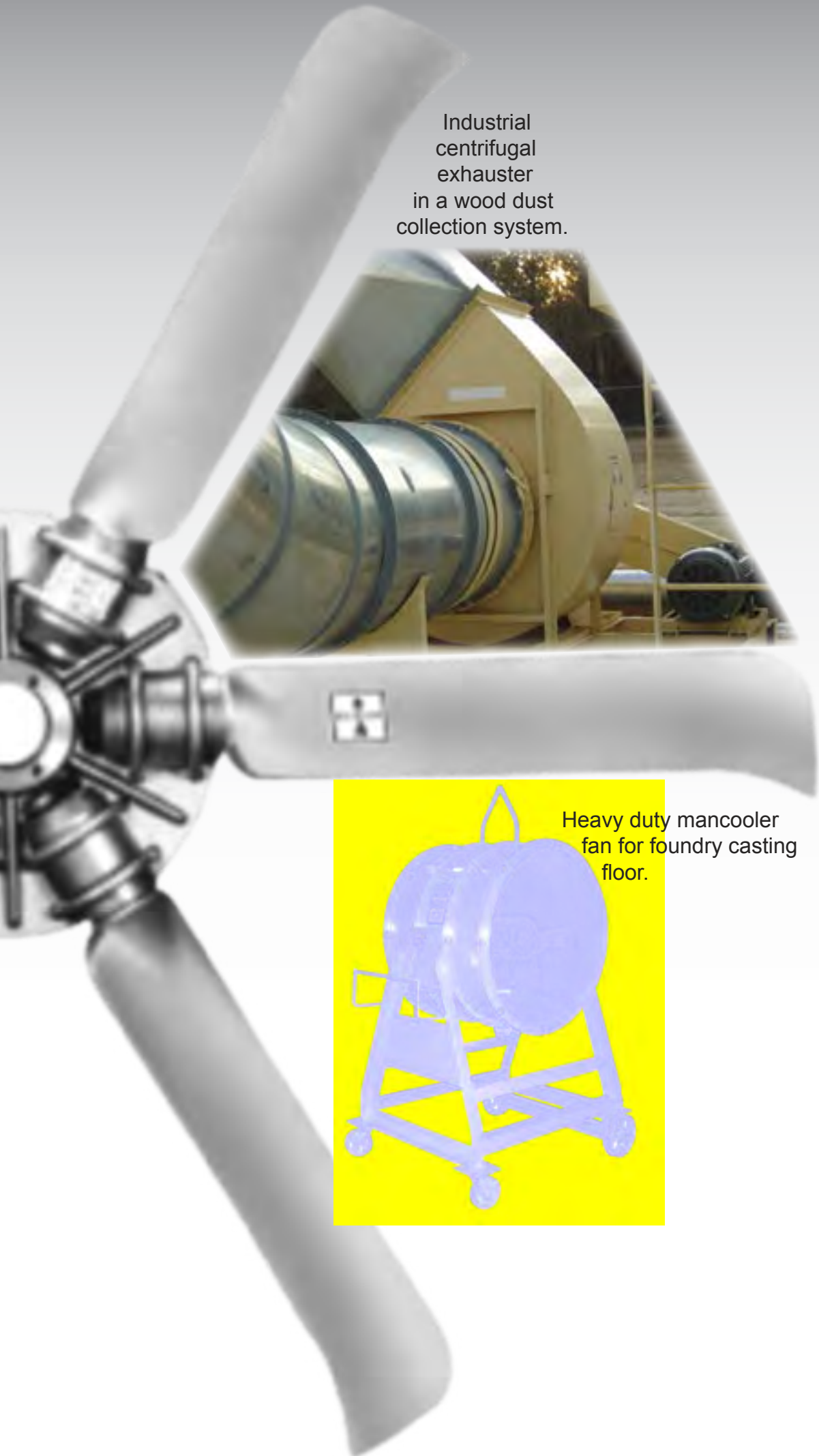
Fluid Engineering fans move:

- Hot air,
- Toxic and corrosive fumes,
- Dust-laden air, and
- Fresh, conditioned make-up air.

Upblast axial fan with swingaway construction.



Industrial centrifugal exhauster in a wood dust collection system.



Heavy duty mancooler fan for foundry casting floor.



AIR POLLUTION CON



Complete wood dust collection system with hoods, duct, collectors, fans, return air systems, airlocks, and material relay conveyor to hopper.

Design drawing for the wood dust collection system shown above.



Custom hoods collecting foundry met-fumes.

Fluid Engineering supplies turn-key solutions to dust and fume problems. From preliminary design to installed equipment, Fluid Engineering can clean your air to exceed OSHA and EPA standards.

Fluid Engineering provides air pollution control systems for various industries, including: Automotive, Chemical, Foundry, Minerals, Pharmaceutical, Rubber, Iron & Steel, and Woodworking.

Dust collection and conveying system for abrasive grindings at an automotive facility.



CONTROL

Cutting and grinding dust collection system in an aerospace facility.



Machine-mounted coolant mist collector on a CNC machining center.



Packed fume scrubber system in a plating facility.



Fluid Engineering offers expertise and equipment to optimize your existing pollution control system. For example:

- Better hoods collect efficiently.
- Airlocks reduce leaks.
- Filtration technology lowers costs.
- Efficient fans save energy.
- Silencers quiet the noise.

PNEUMATIC CONVEYING



From "Ash to Zinc," Fluid Engineering can design a system to convey almost any product.



Blower package conveying hydrated lime.

Fluid Engineering can design a reliable and efficient material system or select the best components to optimize a system.



Rotary airlocks with wear-back elbows conveying lime kiln dust at 450 degrees Fahrenheit.



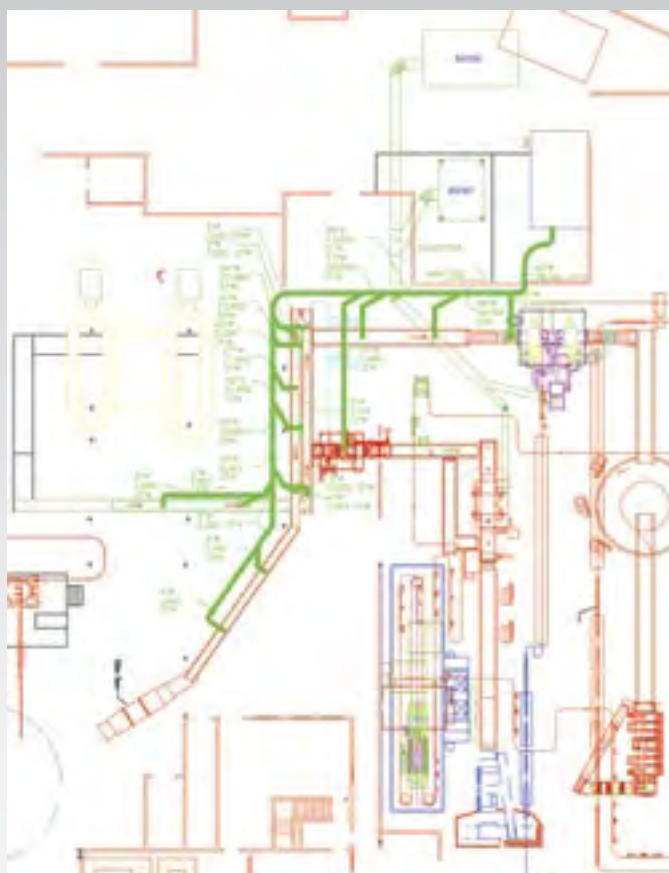
Petro-chemical powder transfer and storage system.



Centrifugal pump system with two stage redundant afterfilters.
Skid computer model at left, finished system at right.



Air-flow measurement.



Proposed air duct layout for dust collection system upgrade, featuring data from a series of air system tests included the test shown at left.

Fluid Engineering engineering services include:

- Pumping system packages,
- Dust collection system design,
- Exhaust system evaluation,
- Pneumatic conveying system design,
- Ventilation system design,
- Air system testing and balancing.

Contact Fluid Engineering today for solutions to your liquid, air and material handling needs.

EQUIPMENT REPAIRS



ANSI end-suction centrifugal pump, pre-repair at left and post-repair at right.



ANSI centrifugal repair parts inventory at Fluid Engineering Birmingham warehouse.



Split-case centrifugal pump repaired and ready for delivery.

Fluid Engineering offers factory-certified repairs of a many pump types including:

- Centrifugal (including end-suction, vertical inline and split- case)
- Rotary gear and lobe
- Mechanically- (diaphragm and plunger) and hydraulically-actuated metering
- Air-operated diaphragm (AOD)
- Progressive-cavity
- Peristaltic hose
- Rotary gear and lobe
- Canned-motor
- Vertical turbine
- Drum
- Submersible
- Piston
- Screw

Fluid Engineering also offers service and repair of valves, meters, airlocks, blowers and a variety of fan types.

Fluid Engineering technicians can also provide onsite start-up, inspection, troubleshooting, and repair services for these types of equipment.

LOCATIONS

BIRMINGHAM, AL
2460 RUFFNER COURT
BIRMINGHAM, AL 35210
PHONE: (205) 956-8900
FAX: (205) 956-0050

DECATUR, AL
800 OLD TRINITY ROAD
TRINITY, AL 35673
PHONE: (256) 355-5600
FAX: (256) 355-5031

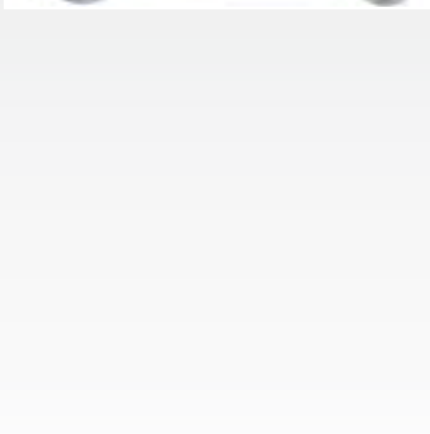
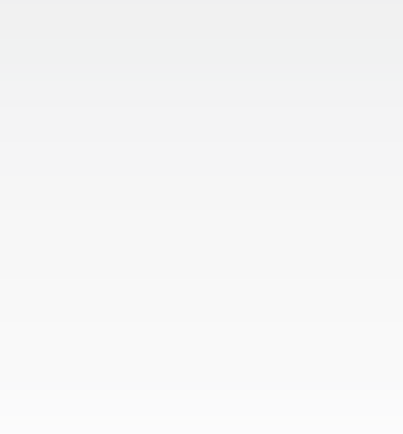
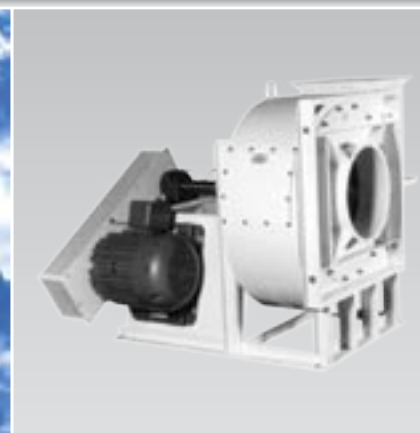
MOBILE, AL
5821 RANGELINE ROAD
SUITE 213
THEODORE, AL 36582
PHONE: (251) 408-0822
FAX: (251) 408-0823

DOTHAN, AL
P.O. Box 1187 (36302)
360 N. OATES STREET
DOTHAN, AL 36303
PHONE: (334) 702-4456
FAX: (334) 702-7568

ATLANTA, GA
7105 DUNCOURTNEY
DRIVE
ATLANTA, GA 30328
PHONE: (770) 396-4462
FAX: (770) 396-4464

Contact your Fluid Engineering sales engineer for additional information about any of the products or services we offer.

Your Fluid Engineering sales engineer:



Fluid Engineering, Inc.
 2460 Ruffner Court
 Birmingham, AL 35210-9794

Tel 205.956.8900
 Fax 205.956.0050
www.fluid-eng.com